



Burlington Gardens, London, W4  
Guide Price £2,900,000

**WHITMAN & CO.**  
SALES · LETTINGS · COMMERCIAL



Set on one of the largest plots along Burlington Gardens and enjoying a notably wider footprint than most homes nearby, this substantial six-bedroom semi-detached house offers a rare opportunity to create an exceptional family home in the heart of Chiswick.

Extending to approximately 3,711 sqft with further potential to extend STPP, the property offers generous proportions throughout. The ground floor features a fabulous entrance hall, two spacious reception rooms, a separate dining room, a kitchen, a bedroom/study, a bathroom and a utility area, all of which benefit from high ceilings and good natural light. The upper floors comprise six well-sized bedrooms, two bathrooms, a kitchen and eaves storage, including a particularly spacious principal bedroom.

A large cellar provides excellent storage, while the wonderful mature rear garden measures 83'x45', offering a private outdoor space ideal for family life and entertaining.

Burlington Gardens is a quiet, tree-lined street ideally positioned for the shops, cafés and restaurants of Chiswick High Road, as well as excellent local schools and transport links at Turnham Green, Chiswick Park and Gunnersbury Stations. The green open spaces of Chiswick House and Gardens and the River Thames are also within easy reach.

Offered for sale with no onward chain.



# Burlington Gardens, W4

Approximate gross internal area

344.79 sq m / 3711 sq ft

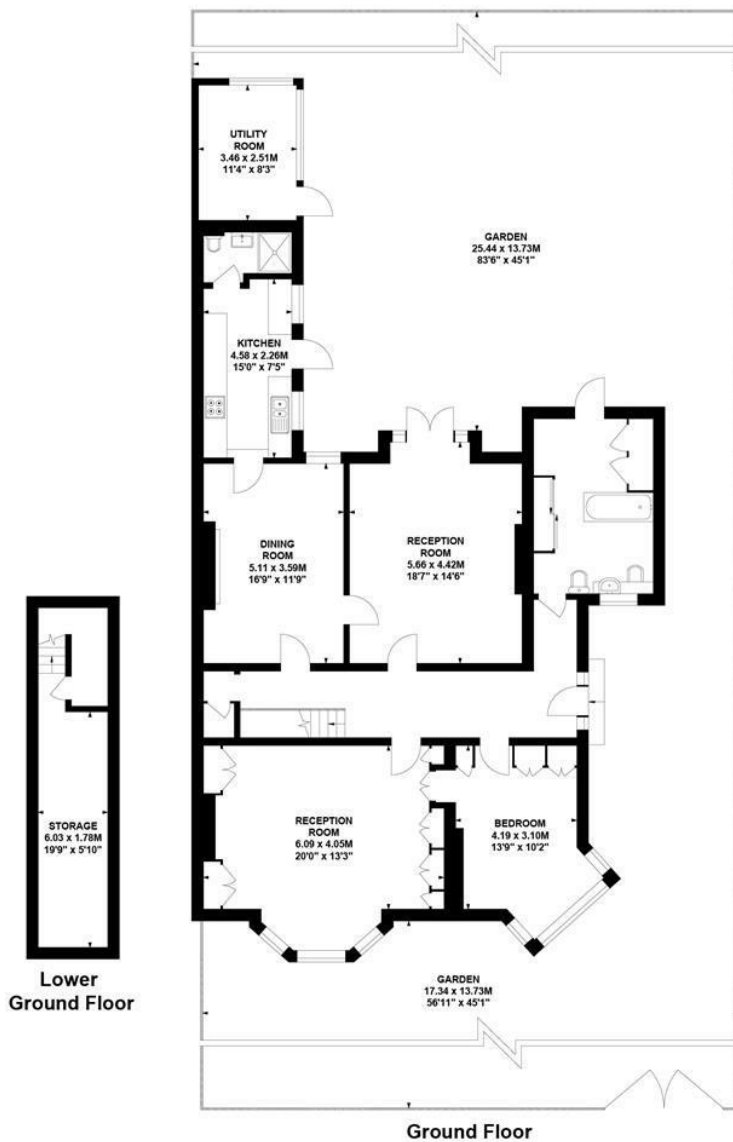
(Including Utility Room)

Utility Room

9.01 sq m / 97 sq ft



Key :  
CH - Ceiling Height



Not to scale, for guidance only and must not be relied upon as a statement of fact.  
All measurements and areas are approximate only

- Substantial six-bedroom semi-detached family home
- Fabulous 83'x45' mature garden
- Prime Chiswick location close to High Road, schools and transport
- Set on one of the widest plots on Burlington Gardens
- Potential to extend and remodel STPP
- No onward chain
- Tenure - Freehold
- Local authority - Hounslow
- Council Tax - Band G

